

## Weekly RPC Clerk's Update: 6-11 November 2018

### Clerk's announcements/delegated decisions:

- Attended SSALC's clerk's technical networking day – useful information about well being, council election and HR matters as well as clerk/council relationship.
- Contacted British Gas regarding feed in tariff for King George V building
- Signs being placed at Rudgwick Hall car park informing general public that parking at the front of the hall is for Hall users only.

### E-MAILS/COMMUNICATION

#### 6.11.2018 E-mail from CAGNE

“



**CAGNE**  
**Aviation Town and Parish**  
**Council Forum**

Wednesday 21st November

*CAGNE Town and Parish Council Forum Meeting*

*7.30pm*

*at Salfords Village Hall, 5 Honeycrock Lane, Salfords, Redhill, Surrey*

*RH1 5DG*

*PLEASE RSVP [cagnetatwick@gmail.com](mailto:cagnetatwick@gmail.com)*

#### AGENDA

*7.30pm*

- 1. Attendance*
- 2. Apologises for absence*
  - a. Introduction of members present*
  - b. Minutes of previous meeting*

3. Report – Trip to Swanwick with NATS  
NMB update
4. Council/ community feed back Reports/issued  
raised by councils
5. Gatwick Master Plan - guest speaker Gatwick Airport and question time
6. Finish 9.30pm

[Link to Master Plan document](#)

[The eleven questions set by Gatwick Airport for a 3 runway airport](#)

[Eleven suggested answers to the eleven questions](#)

<http://cagne.org/>

6.11.2018 e-mail from WSCC

“

*Dear all,*

*This is a reminder that the Bus User Survey closes in just under two weeks on **18 November.***

*Full details are in the email sent 10.10.2018.*

*If you would like to submit a response on behalf of your organisation, please email [buses@westsussex.gov.uk](mailto:buses@westsussex.gov.uk)*

*Best regards*

*Jo Kenworthy  
Information Officer, Transport Bureau  
Economy, Infrastructure & Environment – Highways and Transport  
West Sussex County Council ”*

**6.11.2018 E-mail from Mr Metcalfe regarding Southwater Neighbourhood Plan**



Dear Rudgwick Parish Council (c/o Mrs Jonna Foote),

**SOUTHWATER NEIGHBOURHOOD PLAN - REGULATION 14 CONSULTATION ENDS IN 10 DAYS**

I am writing to advise that the current consultation taking place under Regulation 14 of the Neighbourhood Planning (General) Regulations 2012 **ends in 10 days at midnight on 16th November 2018.**

The Parish Council are currently consulting on the draft plan, and its associated evidence base, to make sure that the plan reflects the aspirations of the local community whilst adhering to its legal requirements and constraints before it is submitted to Horsham District Council. We are seeking views and comments from everyone that has an interest in the parish. Views and comments may relate to the proposed policies, the content/wording of the plan, whether the evidence base is appropriate/correct or whether anything is missing from the plan. If your comments don't fit into one of these categories please don't worry – send us your comments anyway as we would value your thoughts.

All consultation documents and details of how to submit consultation responses can be found at [southwater.joomla.com](http://southwater.joomla.com). The documents can also be inspected at Beeson House (26 Lintot Square, Fairbank Road, Southwater, West Sussex, RH13 9LA) Monday to Friday between the hours of 10:30am and 3:30pm.

All responses to this consultation must be received in writing prior to the end of the consultation period and will be published verbatim when the plan is submitted to Horsham District Council. Anonymous responses, responses that contain inappropriate language, defamation or are deemed to be offensive will not be accepted. If your comment is not accepted we will notify you, so long as contact details have been provided and consent given for us to contact you.

When submitting your response, please use the online form at [southwater.joomla.com](http://southwater.joomla.com), using this not only makes it easier for you to respond, but also saves us valuable volunteer time processing and logging your response. Responses may also be provided, by completing the [digital response form](#) and emailing it to [southwater@enplan.net](mailto:southwater@enplan.net) or by completing the [paper response form](#) and posting it to Southwater Parish Council, Beeson House, 26 Lintot Square, Fairbank Road, Southwater, West Sussex, RH13 9LA.

Drop-in sessions have been held over the consultation period, with one more due to be held 10am - 12noon on Saturday 10th November at Beeson House (26 Lintot Square, Fairbank Road, Southwater, West Sussex, RH13 9LA). At this event you will be able to discuss the plan with those that have developed it. If you are unable to attend this event there is also be a permanent exhibition in Beeson House until the end of the consultation period (accessible Monday to Friday, 10:30am till 3:30pm).

**Please accept our thanks if you have already provided your consultation response – we value your input.**

**If you have not yet responded, we look forward to receiving your consultation response. Please remember to submit your response before midnight on 16<sup>th</sup> November 2018.**

Should you have any difficulty accessing [southwater.joomla.com](http://southwater.joomla.com) or require any further information about this consultation, please do not hesitate to contact myself using the details below or Southwater Parish Council (01403 733202 / [Catherine.Tobin@southwater-pc.gov.uk](mailto:Catherine.Tobin@southwater-pc.gov.uk)).

If you would like to be removed from our database and not contacted again with regard to the Southwater Neighbourhood Development Plan please reply to this email with the word "STOP".

Kind regards,

**Andrew Metcalfe**

Senior Planner | MPlan(Hons) MRTPI

Enplan, 10 Upper Grosvenor Road, Tunbridge Wells, Kent TN1 2EP  
Offices also at Milton Keynes"

#### 8.11.2018 E-mail from NALC: Newsletter

"



*NALC celebrates Star Council Awards winners*

*In a dazzling event at the NALC Annual Conference, the Star Council Awards winners were announced. The annual awards celebrate the positive impact the sector makes to their communities.*

[Continue reading](#)



*Local government minister praises "parish power"*

*In a speech at NALC's Annual Conference, Rishi Sunak paid tribute to local (parish and town) councils and the "people who are dedicated to improving people's lives every single day".*

[Continue reading](#)



*NALC's call to end toilet tax answered by the government*

*The Chancellor of the Exchequer announced that public toilets will receive new mandatory business rates relief, following a prolonged campaign to end the toilet tax by NALC and Members of Parliament.*

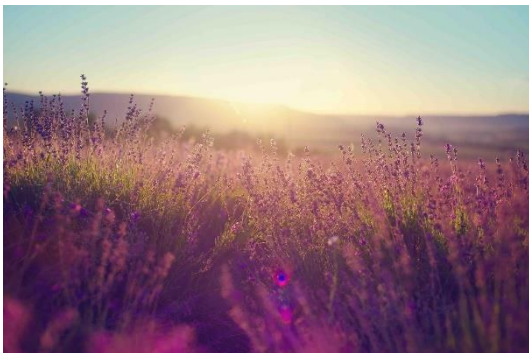
[Continue reading](#)



*NALC launches new diversity report at Annual Conference*

*A new report, Diversity in local councils 2018, from NALC's Diversity Commission finds that local councils lack gender balance, ethnicity and youth. The survey polled 2,100 councillors in England.*

[Continue reading](#)



*Spring Conference 2019*

*The conference takes place on 11 February 2019 at the Royal National Hotel, London. Use our early bird rates, and **save 20%**! Early bird rates end on 30 November 2018.*

[Register your place](#)

## Member updates

Chief executive's blog

“

08.11.2018 E-mail from GACC (Gatwick Area Conservation Campaign.)

### ***“GACC NEWS FLASH***

*A reminder of GACC's Annual General Meeting (AGM) this year.*

*Friday 23<sup>rd</sup> November 2018*

*Commences at 7:30pm Doors open 7:00pm*

*Ardingly Suite*

*Copthorne Hotel*

*Copthorne Way*

*West Sussex RH10 3 PG*

*Full Agenda to follow but items will of course include :-*

*Report on the past year*

*Accounts for 2017-18*

*Election of Committee \*\**

*Discussion on Gatwick's Draft Master Plan and update on Flight Paths*

*\*\*There are some vacancies occurring on our Committee as some members are retiring after many years of service.*

*If you are interested in joining the committee please let the Chairman know by*

*5:00pm on Friday 16<sup>th</sup> November.*

Your are receiving this email as a subscribed member of GACC or you have previously asked to be on our mailing list.

If you wish to be unsubscribed from our email circulation please send a request to [info@gacc.org.uk](mailto:info@gacc.org.uk) and you will be removed.

For Date Protection information please follow this link: [GACC Privacy & Data Protection Policy .pdf](#)

[www.gacc.org.uk](http://www.gacc.org.uk)

#### **09.11.2018 E-mail from WSCC regarding Operation Watershed/Ditch the Problem - Riparian Ownership**

*"Dear Colleague,*

*We would like to draw your attention to the attached information regarding our awareness initiative - **Ditch the Problem.***

*Following feedback received via Operation Watershed from community groups such as yours, WSCC has updated some helpful information to guide landowners and community groups around the tricky subject of Riparian Ownership and Responsibilities.*

*Please find attached a note that summarises what is available and we encourage you when and where you have opportunity you promote to your wider community.*

*Any questions please contact Operation Watershed via:*  
[operation.watershed@westsussex.gov.uk](mailto:operation.watershed@westsussex.gov.uk)

*Many thanks for your time,*

*Kind regards,*

*Roger Elkins, Cabinet Member for Highways and Infrastructure*

*Debbie Kennard, Cabinet Member for Safer, Stronger Communities*

#### **"COMMUNITY BRIEFING NOTE**

##### ***Ditch the Problem - Riparian Ownership***

*Following feedback received via Operation Watershed from community groups, particularly parishes, WSCC has updated some helpful information to guide landowners and community groups around the tricky subject of Riparian Ownership and Responsibilities.*

*Keeping our watercourses well maintained benefits the community as a whole. If an area experiences constant flooding, this becomes a nuisance to the community, can restrict access to property, makes everyday living difficult and results in considerable expense and inconvenience for those that have been flooded.*

*There are various resources including a short film, leaflet and posters as well as more detailed guidance that can be printed and used in your community.*

*You can find the updated resources here:*

[www.westsussex.gov.uk/ditchtheproblem](http://www.westsussex.gov.uk/ditchtheproblem)

We do have a small amount of printed leaflets, if you would like some to circulate please contact Operation Watershed: [operation.watershed@westsussex.gov.uk](mailto:operation.watershed@westsussex.gov.uk)

**Call to Action** As part of your ongoing work to support reducing the risk of flood impacting residents in your local area, continued communication is key to raising awareness. The new material will provide useful practical information and guidance for landowners and residents. When you have the opportunity please would you promote to your community groups and individuals in your area that information is available via the website.

**A little more information in case you are not familiar with Riparian Ownership...**

If you have a watercourse, ditch, stream, river or culvert on or next to your land you are known as a 'riparian owner'. Riparian owners are responsible for the maintenance and upkeep of watercourses on their land to ensure that they are not a flood risk to other people or property.

Well maintained watercourses can significantly benefit the local community by reducing flood risk and creating habitats for wildlife.

The riparian responsibilities for landowners under law are to:

- Ensure the flow of water is not obstructed or polluted
- Maintain the bottom and sides of the watercourse (including managing any trees and vegetation growing on the banks)
- Remove any obstructions, such as rubbish, fallen branches or garden waste
- Maintain any structures (such as trash screens, culverts, weirs and mill gates) on it.

It is important to promote and support communities to look after the watercourses in the county and this information will provide a helpful resource for them.

Further information is available via the website and if you have a particular question relating to Operation Watershed please go to:

<https://www.westsussex.gov.uk/watershed>

Or email: [operation.watershed@westsussex.gov.uk](mailto:operation.watershed@westsussex.gov.uk)

October 2018"





**11.11.2018 E-mail from** The Association of Parish Councils Aviation Group

## "Parish Council Responses to Gatwick Master Plan

To All APCAG Parish Councils,

Gatwick recently issued a Draft Master Plan. Its proposals could have serious implications for many parishes west and north of the airport. We suggest that your parish council responds to the consultation, and we are providing some possible responses below which have been compiled by GACC.

In addition, APCAG will respond. To enable us to do this, we would appreciate your views by 15th December. Please email any comments or, alternatively, we are happy to discuss on the phone or in person.

You can read about it here:

<https://www.gatwickairport.com/masterplan2018>

These are its 3 main proposals:

### 1 - MAIN RUNWAY: USING NEW TECHNOLOGIES TO INCREASE CAPACITY

In the near term, the airport has explored how deploying new technology could increase the capacity of the main runway, offering incremental growth through more efficient operations.

### 2 - STANDBY RUNWAY: INNOVATIVE PLAN TO BRING EXISTING STANDBY RUNWAY INTO USE

Under its current planning agreement, Gatwick's existing standby runway is only used when the main runway is closed for maintenance or emergencies. However, the 40-year planning agreement will come to an end in 2019. The draft master plan sets out for the first time how we could potentially bring our existing standby runway into routine use for departing flights, alongside the main runway, by the mid-2020s. This innovative development, which would meet all international safety requirements, would be delivered without increasing the airport's noise footprint and provide greater operational resilience.

### 3 - ADDITIONAL RUNWAY: SAFEGUARDING FOR THE FUTURE

While we are not actively pursuing the option of a building a brand new runway to the south of the airport - as we did through the Airports Commission process - we believe it is in the national interest to continue to safeguard this land for the future as part of our master plan

Kind Regards,

Ian Hare

Chair APCAG

### GACC Responses

QUESTION 1. Given the above, to what extent, if at all, do you support or oppose the principle of growing Gatwick by making best use of existing runways in line with Government policy? Before answering, you will find it useful to read Chapters 4 and 5 in the full version of the draft master plan.

- Strongly oppose

QUESTION 2. Please explain your view in Q1.

- *Flight frequency will increase creating major noise issues for communities*
- *Claims of reduced aircraft noise in the future are unsubstantiated*
- *Any benefit from quieter aircraft is likely to be outweighed by increased flight frequency*
- *Additional airport capacity will require greater traffic concentration, increasing the noise burden on impacted communities*
- *More flights means more aircraft, generating more air pollution*
- *More flights means increased passenger numbers resulting in more road traffic causing even more road congestion and greater air pollution*
- *Insufficient local housing available to provide homes for additional Gatwick employees leading to more long distance commuting, congestion and pollution*
- *Insufficient local infrastructure for business or residents – roads, business parks, shopping centres, housing, schools, medical centres, hospitals etc.*
- *Providing such infrastructure would destroy huge amounts of countryside and urbanise the rural area around Gatwick*

QUESTION 3. Given the draft master plan looks out beyond 2030, to what extent, if at all, do you agree or disagree that land that has been safeguarded since 2006 should continue to be safeguarded for the future construction of an additional main runway? Before answering, you will find it useful to read Section 5.4 in the full version of the draft master plan.

- *Strongly disagree*

QUESTION 4. Please explain why you hold this view.

- *The Airports Commission “unequivocally and unanimously” selected Heathrow*
- *The Government agreed and parliament has since overwhelmingly endorsed that decision*
- *Placing the majority of the runway capacity in the South East disadvantages the rest of the UK*

QUESTION 5. What more, if anything, do you believe should be done to maximise the employment and economic benefits resulting from Gatwick’s continued growth? Before answering, you will find it useful to read Section 5.6 and Chapter 7 in the full version of the draft master plan.

- *Gatwick already creates a skills shortage for local businesses, further airport expansion will make the situation worse*
- *Increasing our dependency on the airport reduces local business resilience in an economic downturn*
- *In order to thrive the local area doesn’t need more Gatwick expansion*

QUESTION 6. What more, if anything, do you think should be done to minimise the noise impacts of Gatwick's continued growth? Before answering, you will find it useful to read Sections 4.5, 5.5, 6.4 and 6.5 in the full version of the draft master plan.

- *The most common complaint is that the noise occurs too frequently; further expansion will worsen this hugely. Fewer flights by quieter aircraft is what we need.*
- *The width of the arrivals swathe needs to be fully utilised without any concentration*
- *No new areas should be overflowed*
- *New World Health Organisation noise metrics have been ignored. These reduced noise metrics must be used to more accurately reflect the number of people adversely impacted by plane noise*

QUESTION 7. What more, if anything, do you think should be done to minimise the other environmental impacts of Gatwick's continued growth? Before answering, you will find it useful to read Sections 4.5, 5.5 and Chapter 6 in the full version of the draft master plan.

- *Gatwick's attempts to minimise its own environmental impact does not address the real issue, that its primary focus is on airport growth which will always be at odds with the huge environmental damage Gatwick causes. Further expansion will increase flight numbers and will increase this damage.*

QUESTION 8. Do you believe our approach to community engagement, as described in the draft master plan, should be improved, and if so, how? Before answering, you will find it useful to read Chapter 8 in the full version of the draft master plan.

- *Yes*
- *The longstanding inability of Gatwick to provide even a complaints telephone line illustrates its cavalier attitude to local communities*
- *The locations for the exhibition related to this consultation are where favourable views are likely to be expressed i.e. centres of population that are very largely not overflowed. This again demonstrates the fundamental bias that Gatwick exhibits against communities which are adversely affected by its operations.*

QUESTION 9. If you make use of Gatwick, what areas of the passenger experience would you like to see improved?

- *No Comment*

QUESTION 10. Are there any aspects of our Surface Access Strategy that you believe should be improved and, if so, what are they? Before answering, you will find it useful to read Section 4.4 in the full version of the draft master plan.

- *Gatwick is handicapped by an overstretched rail connection north/south and a totally inadequate rail connection east/west*
- *Gatwick only has single motorway access that doesn't provide direct access to London or the coast*
- *Statements that suggest traffic growth is minimal are not reflected in local people's experiences.*
- *Increases in Gatwick's cargo handling will increase HGV traffic significantly impacting the villages around Gatwick.*
- *Gatwick's Surface Access Strategy does little to support rural bus services.*

QUESTION 11. *Do you have any other comments to make about the Gatwick Airport draft master plan?*

- *Strongly oppose all three proposals which will have a devastating impact on communities*
- *Before considering these three major initiatives Gatwick should first consider how best to reduce the impacts caused by current traffic volumes*
- *We are already failing to meet current worldwide Carbon emissions targets, Gatwick's expansion will make this even more challenging*
- *Further aviation expansion will make it even more difficult to meet our commitments under the Paris Agreement*

Copyright © 2018 APCAG All rights reserved. Email: [ianahare@outlook.com](mailto:ianahare@outlook.com)"